

**Theme 1 Children, Young People and Families**

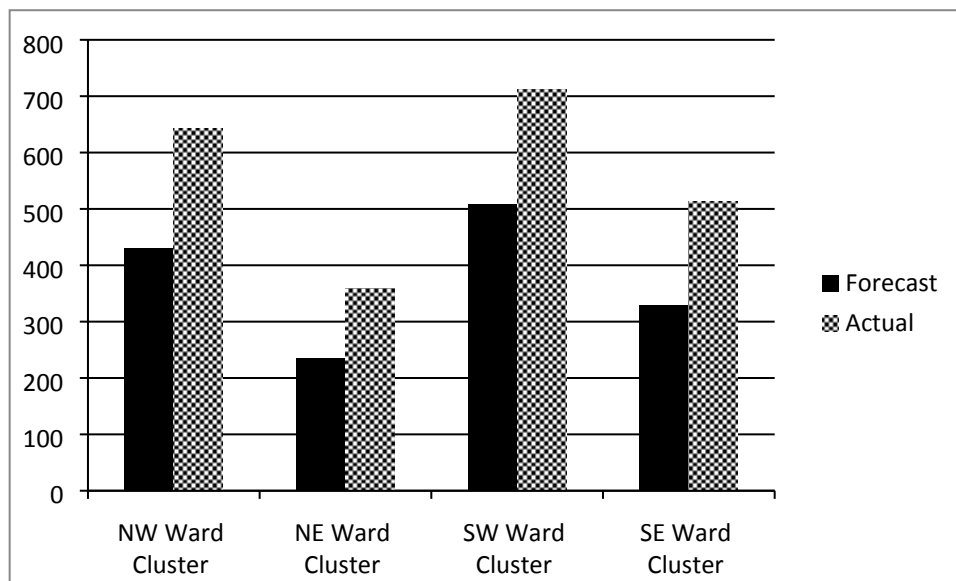
**MSG Programme Period 5 (Oct-Dec 2016) Performance Report**

**Theme 1 – Children, Young People & Families:** This theme focuses on seeking the following key outcomes:

- Improved levels of participation, educational attainment and progression for children and young people.
- Children and young people are protected from harm and families are supported to provide a safe environment.
- Harmful relationships among peer/gender groups are reduced.
- Improved physical (such as reduced levels of obesity) and emotional health and wellbeing in children and young people.
- Reduced levels of substance misuse and sexual abuse, violent crime (including domestic violence) and anti-social behaviour.

**Geographical Breakdown**

The table below shows the number of beneficiaries supported during the period October to December 2016 by Ward Cluster:



NW Ward Cluster	NE Ward Cluster	SW Ward Cluster	SE Ward Cluster
<ul style="list-style-type: none"> <li>• Bethnal Green</li> <li>• Spitalfields &amp; Banglatown</li> <li>• St Peter's</li> <li>• Weavers</li> </ul>	<ul style="list-style-type: none"> <li>• Bow East</li> <li>• Bow West</li> <li>• Bromley North</li> <li>• Bromley South</li> <li>• Mile End</li> </ul>	<ul style="list-style-type: none"> <li>• Shadwell</li> <li>• St Dunstons</li> <li>• St Katherine's &amp; Wapping</li> <li>• Stepney Green</li> <li>• Whitechapel</li> </ul>	<ul style="list-style-type: none"> <li>• Blackwall &amp; Cubitt Town</li> <li>• Canary Wharf</li> <li>• Island Gardens</li> <li>• Lansbury</li> <li>• Limehouse</li> <li>• Poplar</li> </ul>

**Raising Attainment Project Portfolio – Children’s Services**

No. of live projects – Oct-Dec 2016	No. of projects classed as <b>GREEN</b>	No. of projects classed as <b>AMBER</b>	No. of projects classed as <b>RED</b>
9	9	0	0

There are 9 projects in this category; 9 classed as ‘Green’ and meeting the agreed expenditure targets, service outputs and outcomes as indicated in monitoring reports and case studies received. All projects are working closely with schools and parents to provide reciprocal feedback on their young students. Officers will continue to work with organisations to ensure quality driven provision.

**Black Women's Health and Family Support - BWHAFS Supplementary School Programme**

The project is performing at a satisfactory level. There is a requirement to enter into a formal premises arrangement with the Council. It was agreed at the 14 February 17 Grants Determination (Cabinet) Sub-Committee that the quarterly MSG payment be paid monthly in arrears and that the property issues be considered separately for the purposes of MSG payments.

**Vulnerable & Excluded Families Project Portfolio – Children’s Services**

No. of live projects – Oct-Dec 2016	No. of projects classed as <b>GREEN</b>	No. of projects classed as <b>AMBER</b>	No. of projects classed as <b>RED</b>
6	6	0	0

There are 6 projects in this category; 6 of which are classed as ‘Green’ and are on course to meet the agreed expenditure targets, service outputs and outcomes as indicated in monitoring reports received.

**St Giles Trust – Gamechangers**

Following officer visits and the Mainstream Grants Spotlight Review Panel assessment of performance, outstanding payments can be released as a result of the organisation's performance being classified as having a GREEN performance rating.

**Community Languages Project Portfolio - CLC**

No. of live projects Oct-Dec 2016	No. of projects classed as <b>GREEN</b>	No. of projects classed as <b>AMBER</b>	No. of projects classed as <b>RED</b>
10	9	1	0

There are 10 projects in this category; 7 of which are classed as 'Green' and are on course to meet the agreed expenditure targets, service outputs and outcomes as indicated in monitoring reports received.

1 project classed as Amber:

**Cubitt Town Bangladeshi Cultural Association** - Have underperformed on the outputs for this quarter. Monitoring visit is scheduled for 8 March 2017 and a supportive visit to be scheduled. Two thirds of quarterly payment made in accordance with the agreed procedures.

**Youth Services Project Portfolio - CLC**

No. of live projects – Oct-Dec 2016	No. of projects classed as <b>GREEN</b>	No. of projects classed as <b>AMBER</b>	No. of projects classed as <b>RED</b>
16	16	0	0

There are 16 projects in this category; all of which are classed as 'Green' and are on course to meet the agreed expenditure targets, service outputs and outcomes as indicated in monitoring reports received.

The following project has now closed:

City Gateway - Back on Track: Engagement and Progression

**Sports Project Portfolio - CLC**

No. of live projects – Oct-Dec 2016	No. of projects classed as <b>GREEN</b>	No. of projects classed as <b>AMBER</b>	No. of projects classed as <b>RED</b>
7	6	0	1

There are 7 active projects in this category; 6 of which are classed as 'Green' and are on course to meet the agreed expenditure targets, service outputs and outcomes as indicated in monitoring reports received.

1 project classed as Red:

**Children Education Group – Berner Football Academy**

Lack of funding has made an impact as organisation hasn't received any Mainstream Grant funding since September 2015 due to the organisation not meeting the premises condition. The organisation has continued providing a service almost one year on, they are seeking the back payment soon as possible. The committee has decided to suspend the Berner Football Academy from 1st of November 2016 as CEG have spent all the reserved funds and cannot continue run the project. The 14 February 2017 Grants Determination (Cabinet) Sub-Committee agreed that a period of two weeks be offered to the group to make arrangements to meet with the Mayor to discuss their concerns and for mediation. Failure to do so will result in the group being removed from the Grants programme.

**Culture Project Portfolio - CLC**

No. of live projects – Oct-Dec 2016	No. of projects classed as <b>GREEN</b>	No. of projects classed as <b>AMBER</b>	No. of projects classed as <b>RED</b>
8	8	0	0

There are 8 active projects in this category; 8 classed as 'Green' and are on course to meet the agreed expenditure targets, service outputs and outcomes as indicated in monitoring reports received.

Two projects have withdrawn:

Mile End Community Project – Female Leadership and Empowerment Project

Monakka Monowar Welfare Foundation (MMWF) - Life-changing Musical and Keep-fit Project